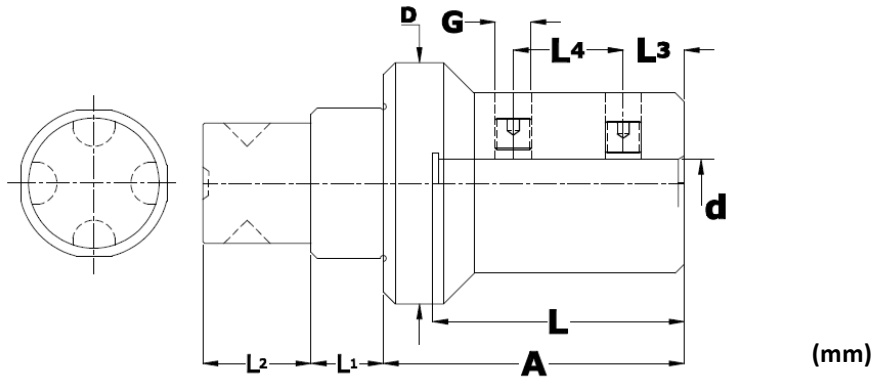


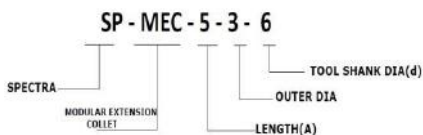
# MODULAR EXTENSION SIDE LOCK:



MODULAR EXTENSION SIDE LOCK COLLECT

DESIGNATION	A	L	D	L1	L2	L3	L4	d	G
SP-MEC-53-06	50	40	30	10	16	10	20	6	M4
SP-MEC-53-08	50	40	30	10	16	10	20	8	M4
SP-MEC-53-10	50	40	30	10	16	10	20	10	M6
SP-MEC-53-12	50	40	40	12	18	10	20	12	M6
SP-MEC-54-14	50	40	40	12	18	10	20	14	M6
SP-MEC-54-16	50	40	40	12	18	15	20	16	M6
SP-MEC-54-18	50	40	40	12	18	15	20	18	M6
SP-MEC-54-20	50	40	40	12	18	15	20	20	M8
SP-MEC-54-25	50	40	40	12	18	15	20	25	M8
SP-MEC-54-32	50	40	40	12	18	15	20	32	M8
SP-MEC-55-12	50	40	50	12	21	10	20	12	M6
SP-MEC-55-14	50	40	50	12	21	10	20	14	M6
SP-MEC-55-16	50	40	50	12	21	15	20	16	M8
SP-MEC-55-18	50	40	50	12	21	15	20	18	M8
SP-MEC-55-20	50	40	50	12	21	15	20	20	M8
SP-MEC-55-22	50	40	50	12	21	15	20	22	M8
SP-MEC-55-25	50	40	50	12	21	15	20	25	M8
SP-MEC-55-28	50	40	50	12	21	15	20	28	M8
SP-MEC-55-32	50	40	50	12	21	15	20	32	M8

## Ordering Instruction



Patent Pending design should not be copied or reproduced without consent.

SPARES



GRUBSCREW

ALLENKEY