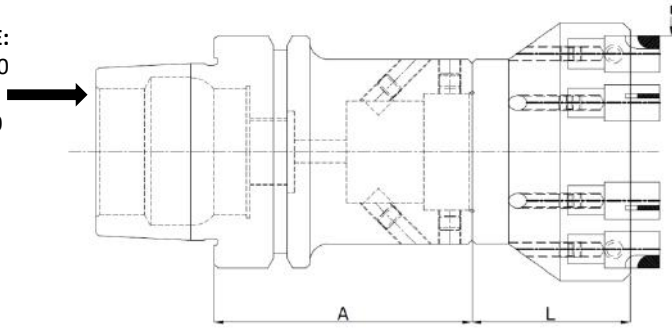


MILLING CUTTER WITH UHS BRAZED TYPE:

SHANK TYPE:

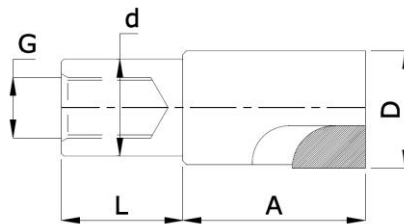
- HSK A 63,100
- CAT 40,50
- ISO 30,40,50
- BT 30,40,50



MILLING CUTTER WITH UCH

DESIGNATION	A	L	D	Z
SP-HSK 63-M40-MC-PCD-65-25	60	50	25	4
SP-HSK 63-M40-MC-PCD-65-32	60	50	32	6
SP-HSK 63-M40-MC-PCD-65-40	60	50	40	6
SP-HSK 63-M50-MC-PCD-65-50	60	60	50	8
SP-HSK 63-M50-MC-PCD-65-63	60	60	63	10
SP-HSK 100-M60-MC-PCD-76-80	70	60	80	16
SP-HSK 100-M60-MC-PCD-76-100	70	60	100	20
SP-HSK 100-M60-MC-PCD-76-120	70	60	120	24

CATRIDGE DETAILS:

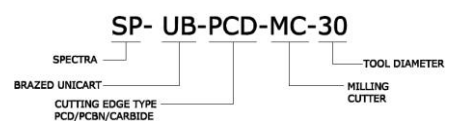
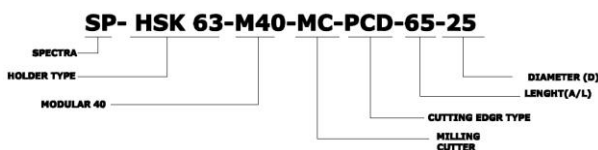


UNICART HOLDING SYSTEM
 US PTO PATENTED
 PATENT NO. 9770770

MILLING CUTTER CATRIDGE

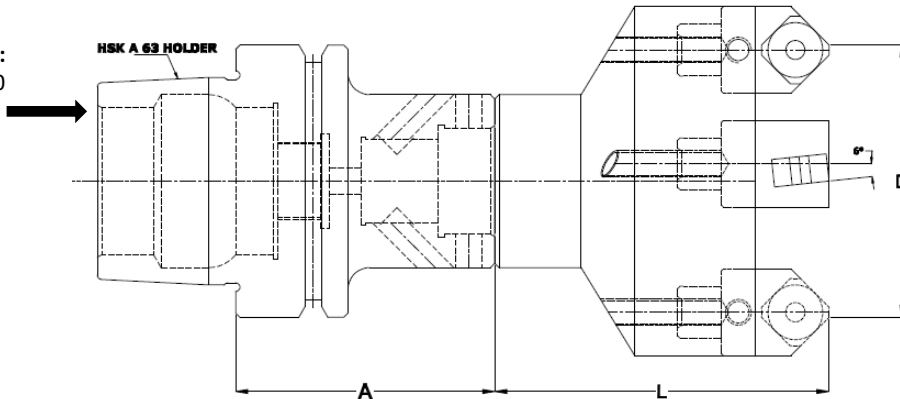
DESIGNATION	A	L	D	d	G(LH)
SP-UB-PCD-MC-25	15	10	10	8	M5
SP-UB-PCD-MC-30	15	10	10	8	M5
SP-UB-PCD-MC-40	15	10	10	8	M5
SP-UB-PCD-MC-50	15	10	10	8	M5
SP-UB-PCD-MC-63	15	10	10	8	M5
SP-UB-PCD-MC-80	15	10	10	8	M5
SP-UB-PCD-MC-100	15	10	10	8	M5
SP-UB-PCD-MC-120	15	10	10	8	M5

Ordering instruction:



MILLING CUTTER WITH UHS INSERT TYPE:

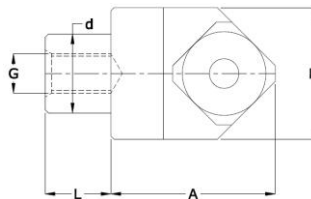
SHANK TYPE:
 HSK A 63,100
 CAT 40,50
 ISO 30,40,50
 BT 30,40,50



MILLING CUTTER WITH UCH

DESIGNATION	A	L	D	Z
SP-HSK 63-MC/IT-M50-68-63	60	80	63	6
SP-HSK 63-MC/IT-M50-68-80	60	80	80	8
SP-HSK 100-MC/IT-M60-78-100	70	80	100	10
SP-HSK 100-MC/IT-M60-710-120	70	100	120	12
SP-HSK 100-MC/IT-M60-710-160	70	100	160	16
SP-HSK 100-MC/IT-M60-710-180	70	100	180	18
SP-HSK 100-MC/IT-M60-710-200	70	100	200	20

CATRIDGE DETAILS:



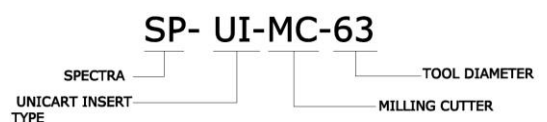
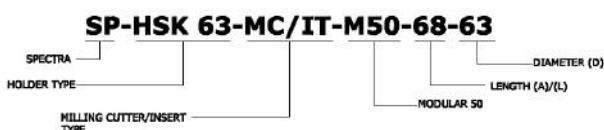
INSERT TYPE:-
 SEMT-133A GEM JM

UNICART HOLDING SYSTEM
 US PTO PATENTED
 PATENT NO. 9770770

MILLING CUTTER CATRIDGE

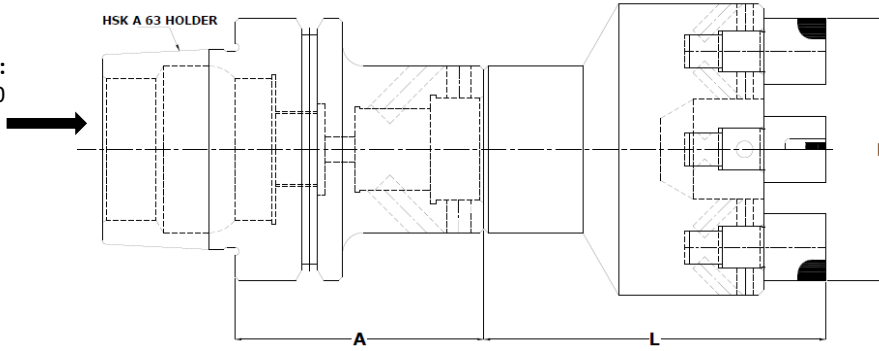
DESIGNATION	A	L	D	d	G(LH)
SP-UI-MC-63	25	10	20	12	M6
SP-UI-MC-80	25	10	20	12	M6
SP-UI-MC-100	25	10	20	12	M6
SP-UI-MC-120	25	10	20	12	M6
SP-UI-MC-160	25	10	20	12	M6
SP-UI-MC-180	25	10	20	12	M6
SP-UI-MC-200	25	10	20	12	M6

Ordering instruction:



MILLING CUTTER WITH UHS INSERT TYPE:

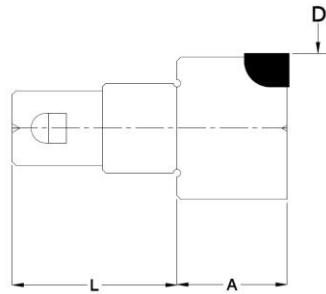
SHANK TYPE:
 HSK A 63,100
 CAT 40,50
 ISO 30,40,50
 BT 30,40,50



MILLING CUTTER WITH UCH

DESIGNATION	A	L	D	Z
SP-HSK 63-MC/UM-PCD-M50-68-63	60	80	63	4
SP-HSK 63-MC/UM-PCD-M50-68-80	60	80	80	4
SP-HSK 100-MC/UM-PCD-M50-68-100	70	80	100	6
SP-HSK 100-MC/UM-PCD-M50-68-120	70	100	120	6
SP-HSK 100-MC/UM-PCD-M50-68-160	70	100	160	8
SP-HSK 100-MC/UM-PCD-M50-68-180	70	100	180	8
SP-HSK 100-MC/UM-PCD-M50-68-200	70	100	200	10

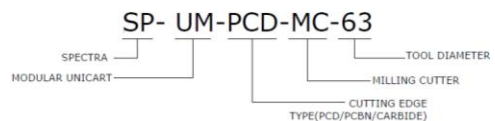
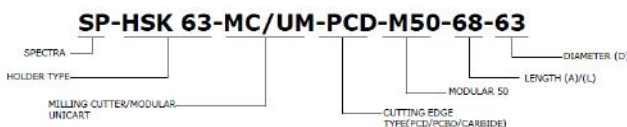
CATRIDGE DETAILS:



MILLING CUTTER CATRIDGE

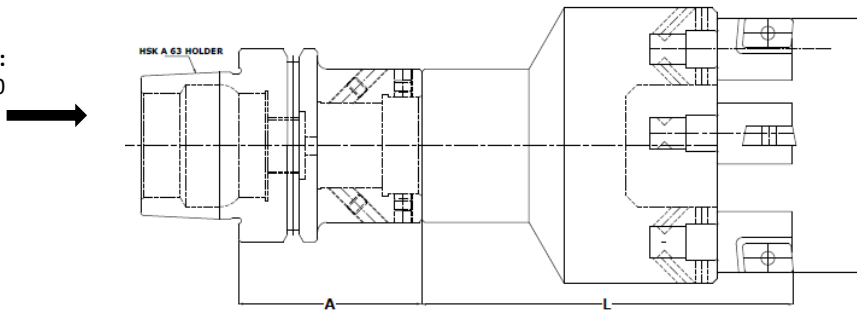
DESIGNATION	A	L	D
SP-UM-PCD-MC-63	15	18	16
SP-UM-PCD-MC-80	15	18	16
SP-UM-PCD-MC-100	15	18	16
SP-UM-PCD-MC-120	15	18	16
SP-UM-PCD-MC-160	15	18	16
SP-UM-PCD-MC-180	15	18	16
SP-UM-PCD-MC-200	15	18	16

Ordering instruction:



MILLING CUTTER WITH UHS INSERT TYPE:

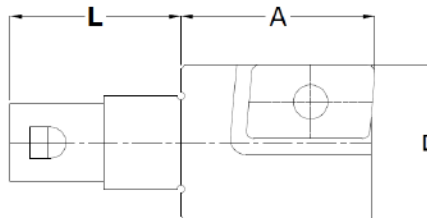
SHANK TYPE:
 HSK A 63,100
 CAT 40,50
 ISO 30,40,50
 BT 30,40,50



MILLING CUTTER WITH UCH

DESIGNATION	A	L	D	Z
SP-HSK 63-MC/UMI-M50-68-63	60	80	63	4
SP-HSK 63-MC/UMI-M50-68-80	60	80	80	4
SP-HSK 100-MC/UMI-M50-68-100	70	80	100	4
SP-HSK 100-MC/UMI-M50-68-120	70	100	120	6
SP-HSK 100-MC/UMI-M50-68-160	70	100	160	6
SP-HSK 100-MC/UMI-M50-68-180	70	100	180	6
SP-HSK 100-MC/UMI-M50-68-200	70	100	200	8

CATRIDGE DETAILS:



MILLING CUTTER CATRIDGE

DESIGNATION	A	L	D
SP-UMI-MC-63	25	22	20
SP-UMI-MC-80	25	22	20
SP-UMI-MC-100	25	22	20
SP-UMI-MC-120	25	22	20
SP-UMI-MC-160	25	22	20
SP-UMI-MC-180	25	22	20
SP-UMI-MC-200	25	22	20

Ordering instruction:

