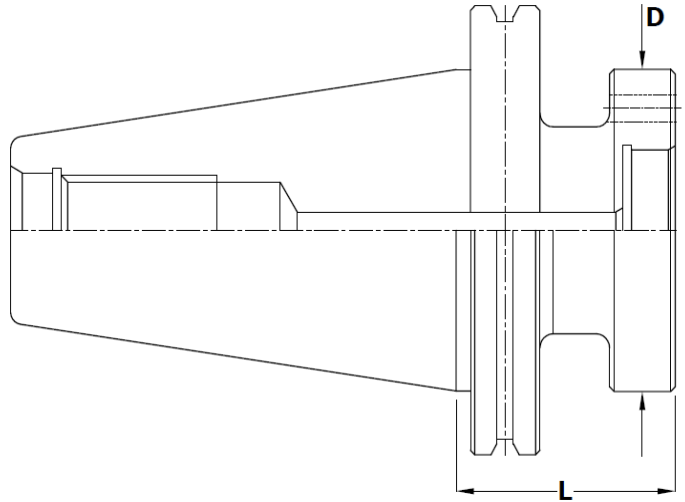


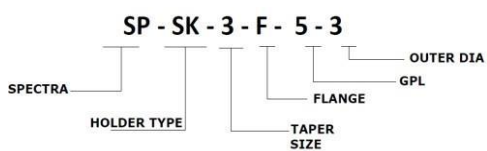
SK HOLDER:



(mm)

FLANGE			
TAPER SIZE	DESIGNATION	GPL (L)	OD (D)
SK-30	SP-SK-3F-56	50	60
	SP-SK-3F-57	50	70
	SP-SK-3F-66	60	60
	SP-SK-3F-67	60	70
SK-40	SP-SK-4F-66	60	60
	SP-SK-4F-67	60	70
	SP-SK-4F-68	60	80
SK-50	SP-SK-5F-66	60	60
	SP-SK-5F-67	60	70
	SP-SK-5F-68	60	80

Ordering Instruction



SPARES



GRUBSCREW



ALLENKEY